

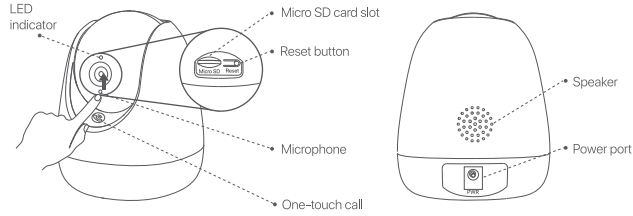
Quick Installation Guide

Security Pan/Tilt Camera CP3 Pro/RP3 Pro

Package Contents

- Camera x 1
- Base x 1
- Power adapter x 1
- Installation template x 1
- Screw x 2 (Length: 25 mm, Head diameter: 6.0 mm)
- Anchor x 2 (Height: 6.6 mm, Inner diameter: 2.4 mm, Length: 26.4 mm)
- Quick installation guide

Appearance

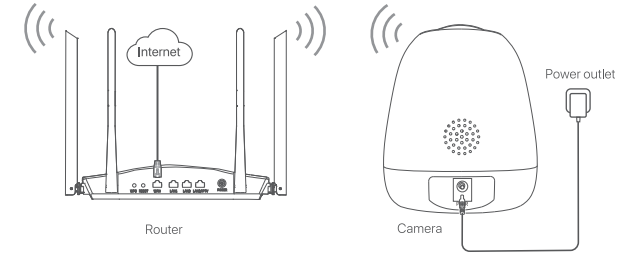


LED indicator	Solid red: Initializing. Blinking red slowly: Disconnected from a 2.4 GHz Wi-Fi network. Blinking red quickly: Connecting to a 2.4 GHz Wi-Fi network. Solid blue: Connected to a 2.4 GHz Wi-Fi network. Blinking blue slowly: Upgrading. Blinking blue quickly: Waiting to connect to a 2.4 GHz Wi-Fi network.
Reset button	Hold down the Reset button for about 5 seconds and release it when the LED indicator blinks blue quickly or you hear a prompt tone. The camera is reset successfully.
Micro SD card slot	Turn the lens upward, then you can see it.
	One-touch call button. Used to make a video call to the app remotely.

Add the Camera to TDSEE App

⚙️ Tips:
Before adding your camera, please ensure that the router is connected the internet successfully and the filter function is disabled.

- ① **Power on the camera.**
The LED indicator lights solid red after the camera is powered on. When the LED indicator blinks blue quickly, the camera is waiting to connect to a 2.4 GHz Wi-Fi network.



FAQ

Q1. What should I do if I failed to add the camera?

- A1.** Try the following solutions:
- Ensure that the router is connected to the internet.
 - The camera only supports 2.4 GHz Wi-Fi. When adding the camera, you need to connect the smartphone to a 2.4 GHz Wi-Fi.
 - Do not hide the Wi-Fi network of the router when adding the camera (After adding the camera successfully, you can hide the Wi-Fi network).
 - Confirm whether the LED indicator of the camera blinks blue quickly. If not, reset the camera by referring to **Appearance** and configure it again.

Q2. What should I do when the video preview is not smooth?

- A2.** Try the following solutions:
- Check if the Wi-Fi network of the router is smooth.
 - Take the router closer to the camera.
 - When previewing the video with cellular mobile data, ensure that the internet connection of the smartphone is smooth.
 - **Auto, Fluent, and HD** are supported for video preview. **Auto** is used by default. You can adjust the video clarity according to the internet status.

Q3. How to view the videos stored in the Micro SD card of the camera on the computer?

- A3.** If you remove the Micro SD card installed in the camera and view the videos from your computer, it is recommended to use VLC media player or Potplayer to play the videos.

- ② Download the **TDSEE App** onto your mobile device by searching for **TDSEE** in the **App Store** or **Google Play** or by scanning the **QR code**.



Or



QR code



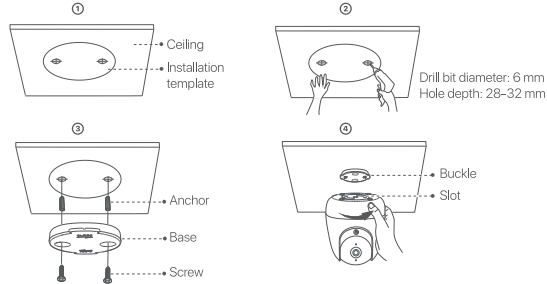
- ③ Run the **TDSEE App** and follow the instructions to complete user registration. Enter the home page, tap **Add a device** or **+** in the upper right corner of the homepage.

- ④ Scan the **QR code** on the bottom of the camera, and follow the instructions in the App.

Install the Device

The camera supports desktop, ceiling and wall mounting. This guide takes ceiling mounting as an example.

- ⚙️ Tips:**
- (1) Ensure that the ceiling is strong enough to withstand three times the weight of the camera and base.
 - (2) You may need a hammer drill, a drill bit, a screwdriver, and a ladder for the installation.



After finishing the ceiling mounting, you need to adjust the camera installation status to facilitate monitoring.

Method: Run the **TDSEE App**. Choose the camera on the homepage, tap **Settings** (⚙️) in the upper right corner > **Video Flip-over**, and choose **Camera UP-side Down**.

Q4. How to store the video?

A4.

Method 1: Install the Micro SD card to the camera. By default, the camera's recording mode is **Alarm Recording**, which can be changed to **All-day Recording** through **TDSEE** App.

Method 2: Subscribe to the **Cloud Storage Service** on **TDSEE** App.

Procedure: Run the **TDSEE** App, choose the camera on the home page, and then tap **Cloud Storage** in the lower left corner. You can enjoy free cloud storage service (7-day loop detection recording) for 3 months upon the first activation.

Method 3: Connect the camera to the NVR. The camera supports the ONVIF protocol and can be added to the NVR either wired or wireless method for recording storage. The default user name of the camera is **admin**, and the default password can be found on the label of the camera's body. The specific configuration method of the NVR is subject to the manufacturer's instructions.

Get Support and Services

For technical specifications, user guides and more information, please visit the product page or service page on www.tendacn.com. Multiple languages are available.



<https://www.tendacn.com/service/default.html>

You can see the product name and model on the product label.



CE Mark Warning

This is a Class B product. In a domestic environment, this product may cause radio interference, in which case the user may be required to take adequate measures. This equipment should be installed and operated with minimum distance 20cm between the device and your body. **NOTE:** (1) The manufacturer is not responsible for any radio or TV interference caused by unauthorized modifications to this equipment. (2) To avoid unnecessary radiation interference, it is recommended to use a shielded RJ45 cable.

Declaration of Conformity

Hereby, SHENZHEN TENDA TECHNOLOGY CO., LTD. declares that the device is in compliance with Directive 2014/53/EU.

The full text of the EU declaration of conformity is available at the following internet address: <https://www.tendacn.com/download/list-9.html>

<p>English: Operating Frequency/Max Output Power Polish: Częstotliwość pracy / Maksymalna moc wyjściowa Deutsch: Betriebsfrequenz/Max. Ausgangsleistung Français: Fréquence de fonctionnement/Puissance de sortie maximale Nederlands: Bedrijfsfrequentie/Maximaal uitgangsvermogen Čeština: Provozní frekvence/maximální výstupní výkon Română: Frecvența de funcționare/Puterea maximă de ieșire Português: Frequência de Funcionamento/Potência Máxima de Saída</p>	2412MHz-2472MHz/20dBm
---	-----------------------

Safety Precautions

Before operating, read the operation instructions and precautions to be taken, and follow them to prevent accidents. The warning and danger items in other documents do not cover all the safety precautions that must be followed. They are only supplementary information, and the installation and maintenance personnel need to understand the basic safety precautions to be taken.

- For desktop mounting, the device must be horizontally mounted for safe use.
 - For wall/ceiling mounting, the device is suitable for mounting at heights > 2m.
 - Do not use the device in a place where wireless devices are not allowed.
 - Please use the included power adapter.
 - The mains plug is used as the disconnect device, and shall remain readily operable.
 - The power socket shall be installed near the device and easily accessible.
 - Device operating environment: Temperature: -10°C - 45°C; Humidity: (10% - 95%) RH, non-condensing; Device storage environment: Temperature: -40°C - 70°C; Humidity: (3% - 95%) RH, non-condensing.
 - Power adapter operating environment: Temperature: 0°C - 40°C; Humidity: (5% - 95%) RH, non-condensing, Power adapter storage environment: Temperature: -20°C - 70°C; Humidity: (5% - 95%) RH, non-condensing.
 - Keep the device away from water, fire, high electric field, high magnetic field, and inflammable and explosive items.
 - Unplug this device and disconnect all cables during lightning storms or when the device is unused for long periods.
 - Do not use the power adapter if its plug or cord is damaged.
 - If such phenomena as smoke, abnormal sound or smell appear when you use the device, immediately stop using it and disconnect its power supply, unplug all connected cables, and contact the after-sales service personnel.
 - Disassembling or modifying the device or its accessories without authorization voids the warranty, and might cause safety hazards.
- For the latest safety precautions, see **Safety and Regulatory Information** on www.tendacn.com.



FCC Statement

This equipment has been tested and found to comply with the limits for a Class B digital device, pursuant to Part 15 of the FCC Rules. These limits are designed to provide reasonable protection against harmful interference in a residential installation. This equipment generates, uses and can radiate radio frequency energy and, if not installed and used in accordance with the instructions, may cause harmful interference to radio communications. However, there is no guarantee that interference will not occur in a particular installation. If this equipment does cause harmful interference to radio or television reception, which can be determined by turning the equipment off and on, the user is encouraged to try to correct the interference by one or more of the following measures:

- Reorient or relocate the receiving antenna.
 - Increase the separation between the equipment and receiver.
 - Connect the equipment into an outlet on a circuit different from that to which the receiver is connected.
 - Consult the dealer or an experienced radio/TV technician for help.
- Operation is subject to the following two conditions: (1) this device may not cause harmful interference, and (2) this device must accept any interference received, including interference that may cause undesired operation.

Radiation Exposure Statement

This device complies with FCC radiation exposure limits set forth for an uncontrolled environment and it also complies with Part 15 of the FCC RF Rules.

This equipment should be installed and operated with minimum distance 20cm between the device and your body.

Caution:

Any changes or modifications not expressly approved by the party responsible for compliance could void the user's authority to operate this equipment.

This transmitter must not be co-located or operating in conjunction with any other antenna or transmitter. Operating frequency: 2412-2462MHz

NOTE: (1) The manufacturer is not responsible for any radio or TV interference caused by unauthorized modifications to this equipment. (2) To avoid unnecessary radiation interference, it is recommended to use a shielded RJ45 cable.



RECYCLING

This product bears the selective sorting symbol for Waste electrical and electronic equipment (WEEE). This information should be included and handled pursuant to European directive 2012/19/EU in order to be recycled or dismantled to minimize its impact on the environment.

User has the choice to give his product to a competent recycling organization or to the retailer when he buys new electrical or electronic equipment.



Technical Support

Shenzhen Tenda Technology Co., Ltd.
Floor 6-8, Tower E3, No.1001, Zhongshanyuan Road, Nanshan District, Shenzhen, China. 518052
Website: www.tendacn.com
E-mail: tendasecurity@tenda.cn
support.us@tenda.cn (North America)
support.uk@tenda.cn (United Kingdom)

Copyright © 2024 Shenzhen Tenda Technology Co., Ltd. All rights reserved.

Tenda is a registered trademark legally held by Shenzhen Tenda Technology Co., Ltd. Other brand and product names mentioned herein are trademarks or registered trademarks of their respective holders. Specifications are subject to change without notice.